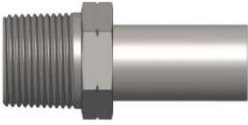


NPT x Standpipe Connector



SPN

NPT x Standpipe Connector



NPT - ANSI B1.20.1 - Taper

| Part No | Thread | Thread | Stock |
|---------|----------|---------|-------|
| | 1 NPT | 2 SP | |
| SPN0206 | 1/8 | 6 | • |
| SPN0208 | 1/8 | 8 | - |
| SPN0210 | 1/8 | 10 | - |
| SPN0212 | 1/8 | 12 | - |
| SPN0214 | 1/8 | 14 | - |
| SPN0215 | 1/8 | 15 | - |
| SPN0216 | 1/8 | 16 | - |
| SPN0218 | 1/8 | 18 | - |
| SPN0220 | 1/8 | 20 | - |
| SPN0222 | 1/8 | 22 | - |
| SPN0225 | 1/8 | 25 | - |
| SPN0228 | 1/8 | 28 | - |
| SPN0230 | 1/8 | 30 | - |
| SPN0235 | 1/8 | 35 | - |
| SPN0238 | 1/8 | 38 | - |
| SPN0242 | 1/8 | 42 | - |
| SPN0406 | 1/4 | 6 | • |
| SPN0408 | 1/4 | 8 | • |
| SPN0410 | 1/4 | 10 | • |
| SPN0412 | 1/4 | 12 | - |
| SPN0414 | 1/4 | 14 | - |
| SPN0415 | 1/4 | 15 | - |
| SPN0416 | 1/4 | 16 | - |
| SPN0418 | 1/4 | 18 | - |
| SPN0420 | 1/4 | 20 | - |
| SPN0422 | 1/4 | 22 | - |
| SPN0425 | 1/4 | 25 | - |
| SPN0428 | 1/4 | 28 | - |
| SPN0430 | 1/4 | 30 | - |
| SPN0435 | 1/4 | 35 | - |
| SPN0438 | 1/4 | 38 | - |
| SPN0442 | 1/4 | 42 | - |
| SPN0606 | 3/8 | 6 | - |
| SPN0608 | 3/8 | 8 | - |
| SPN0610 | 3/8 | 10 | • |
| SPN0612 | 3/8 | 12 | • |
| SPN0614 | 3/8 | 14 | - |
| SPN0615 | 3/8 | 15 | - |
| SPN0616 | 3/8 | 16 | - |
| SPN0618 | 3/8 | 18 | - |
| SPN0620 | 3/8 | 20 | - |
| SPN0622 | 3/8 | 22 | - |
| SPN0625 | 3/8 | 25 | - |
| SPN0628 | 3/8 | 28 | - |
| SPN0630 | 3/8 | 30 | - |
| SPN0635 | 3/8 | 35 | - |
| SPN0638 | 3/8 | 38 | - |
| SPN0642 | 3/8 | 42 | - |

| Part No | Thread | Thread | Stock |
|---------|----------|---------|-------|
| | 1 NPT | 2 SP | |
| SPN0806 | 1/2 | 6 | - |
| SPN0808 | 1/2 | 8 | - |
| SPN0810 | 1/2 | 10 | - |
| SPN0812 | 1/2 | 12 | - |
| SPN0814 | 1/2 | 14 | • |
| SPN0815 | 1/2 | 15 | • |
| SPN0816 | 1/2 | 16 | • |
| SPN0818 | 1/2 | 18 | • |
| SPN0820 | 1/2 | 20 | - |
| SPN0822 | 1/2 | 22 | - |
| SPN0825 | 1/2 | 25 | - |
| SPN0828 | 1/2 | 28 | - |
| SPN0830 | 1/2 | 30 | - |
| SPN0835 | 1/2 | 35 | - |
| SPN0838 | 1/2 | 38 | - |
| SPN0842 | 1/2 | 42 | - |
| SPN1006 | 5/8 | 6 | - |
| SPN1008 | 5/8 | 8 | - |
| SPN1010 | 5/8 | 10 | - |
| SPN1012 | 5/8 | 12 | - |
| SPN1014 | 5/8 | 14 | - |
| SPN1015 | 5/8 | 15 | - |
| SPN1016 | 5/8 | 16 | - |
| SPN1018 | 5/8 | 18 | - |
| SPN1020 | 5/8 | 20 | - |
| SPN1022 | 5/8 | 22 | - |
| SPN1025 | 5/8 | 25 | - |
| SPN1028 | 5/8 | 28 | - |
| SPN1030 | 5/8 | 30 | - |
| SPN1035 | 5/8 | 35 | - |
| SPN1038 | 5/8 | 38 | - |
| SPN1042 | 5/8 | 42 | - |
| SPN1206 | 3/4 | 6 | - |
| SPN1208 | 3/4 | 8 | - |
| SPN1210 | 3/4 | 10 | - |
| SPN1212 | 3/4 | 12 | - |
| SPN1214 | 3/4 | 14 | - |
| SPN1215 | 3/4 | 15 | - |
| SPN1216 | 3/4 | 16 | - |
| SPN1218 | 3/4 | 18 | - |
| SPN1220 | 3/4 | 20 | • |
| SPN1222 | 3/4 | 22 | • |
| SPN1225 | 3/4 | 25 | - |
| SPN1228 | 3/4 | 28 | - |
| SPN1230 | 3/4 | 30 | - |
| SPN1235 | 3/4 | 35 | - |
| SPN1238 | 3/4 | 38 | - |
| SPN1242 | 3/4 | 42 | - |

- BS** Bonded Seal
- ✓ Standard Ex Stock
- Non Standard Ex Stock
- Special Fabricate Stock

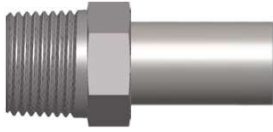
Material : Steel , SS 316 , SS 304 , Brass , Aluminum

NPT x Standpipe Connector



SPN

NPT x Standpipe Connector



NPT - ANSI B1.20.1 - Taper

| Part No | Thread | Thread | Stock |
|---------|----------|---------|-------|
| | 1 NPT | 2 SP | |
| SPN1606 | 1 | 6 | - |
| SPN1608 | 1 | 8 | - |
| SPN1610 | 1 | 10 | - |
| SPN1612 | 1 | 12 | - |
| SPN1614 | 1 | 14 | - |
| SPN1615 | 1 | 15 | - |
| SPN1616 | 1 | 16 | - |
| SPN1618 | 1 | 18 | - |
| SPN1620 | 1 | 20 | - |
| SPN1622 | 1 | 22 | - |
| SPN1625 | 1 | 25 | • |
| SPN1628 | 1 | 28 | • |
| SPN1630 | 1 | 30 | - |
| SPN1635 | 1 | 35 | - |
| SPN1638 | 1 | 38 | - |
| SPN1642 | 1 | 42 | - |
| SPN2006 | 1 1/4 | 6 | - |
| SPN2008 | 1 1/4 | 8 | - |
| SPN2010 | 1 1/4 | 10 | - |
| SPN2012 | 1 1/4 | 12 | - |
| SPN2014 | 1 1/4 | 14 | - |
| SPN2015 | 1 1/4 | 15 | - |
| SPN2016 | 1 1/4 | 16 | - |
| SPN2018 | 1 1/4 | 18 | - |
| SPN2020 | 1 1/4 | 20 | - |
| SPN2022 | 1 1/4 | 22 | - |
| SPN2025 | 1 1/4 | 25 | - |
| SPN2028 | 1 1/4 | 28 | - |
| SPN2030 | 1 1/4 | 30 | • |
| SPN2035 | 1 1/4 | 35 | • |
| SPN2038 | 1 1/4 | 38 | - |
| SPN2042 | 1 1/4 | 42 | - |

| Part No | Thread | Thread | Stock |
|---------|----------|---------|-------|
| | 1 NPT | 2 SP | |
| SPN2406 | 1 1/2 | 6 | - |
| SPN2408 | 1 1/2 | 8 | - |
| SPN2410 | 1 1/2 | 10 | - |
| SPN2412 | 1 1/2 | 12 | - |
| SPN2414 | 1 1/2 | 14 | - |
| SPN2415 | 1 1/2 | 15 | - |
| SPN2416 | 1 1/2 | 16 | - |
| SPN2418 | 1 1/2 | 18 | - |
| SPN2420 | 1 1/2 | 20 | - |
| SPN2422 | 1 1/2 | 22 | - |
| SPN2425 | 1 1/2 | 25 | - |
| SPN2428 | 1 1/2 | 28 | - |
| SPN2430 | 1 1/2 | 30 | - |
| SPN2435 | 1 1/2 | 35 | - |
| SPN2438 | 1 1/2 | 38 | • |
| SPN2442 | 1 1/2 | 42 | • |
| SPN3206 | 2 | 6 | - |
| SPN3208 | 2 | 8 | - |
| SPN3210 | 2 | 10 | - |
| SPN3212 | 2 | 12 | - |
| SPN3214 | 2 | 14 | - |
| SPN3215 | 2 | 15 | - |
| SPN3216 | 2 | 16 | - |
| SPN3218 | 2 | 18 | - |
| SPN3220 | 2 | 20 | - |
| SPN3222 | 2 | 22 | - |
| SPN3225 | 2 | 25 | - |
| SPN3228 | 2 | 28 | - |
| SPN3230 | 2 | 30 | - |
| SPN3235 | 2 | 35 | - |
| SPN3238 | 2 | 38 | - |
| SPN3242 | 2 | 42 | - |

- ✓ Standard Ex Stock
- Jump Size Ex Stock
- Special Fabricate Stock - Within 5 working days

Material : Steel , SS 316 , SS 304 , Brass , Aluminum

- BS** Bonded Seal
- ✓ Standard Ex Stock
- Non Standard Ex Stock
- Special Fabricate Stock

Material : Steel , SS 316 , SS 304 , Brass , Aluminum