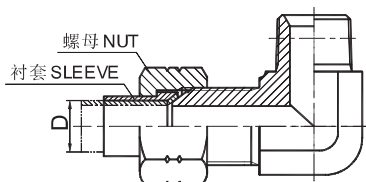
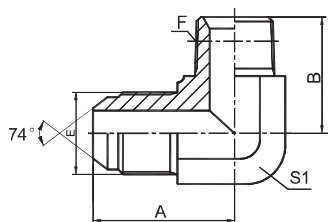


过渡接头 ADAPTER



1JN9

90° 弯 JIC 外螺纹 74° 外锥 / 布锥管外螺纹
90° ELBOW JIC MALE 74° CONE / NPT MALE

代号 PART NO.	螺纹 THREAD		尺寸 DIMENSIONS					
	E	F	A	B	S1			
1JN9-02	5/16"X24	Z1/8"X27	21	21	11			
1JN9-03-02	3/8"X24	Z1/8"X27	22	21	11			
1JN9-04	7/16"X20	Z1/4"X18	26.6	25.5	14			
1JN9-04-02	7/16"X20	Z1/8"X27	24.5	21	11			
1JN9-04-06	7/16"X20	Z3/8"X18	29.5	31	19			
1JN9-05-02	1/2"X20	Z1/8"X27	26.6	23.5	14			
1JN9-05-04	1/2"X20	Z1/4"X18	26.6	25.5	14			
1JN9-05-06	1/2"X20	Z3/8"X18	29.5	31	19			
1JN9-06	9/16"X18	Z3/8"X18	30	31	19			
1JN9-06-04	9/16"X18	Z1/4"X18	26.9	25.5	14			
1JN9-06-08	9/16"X18	Z1/2"X14	32	36.7	22			
1JN9-08	3/4"X16	Z1/2"X14	34.8	37.3	22			
1JN9-08-04	3/4"X16	Z1/4"X18	32	28.5	19			
1JN9-08-06	3/4"X16	Z3/8"X18	32	31	19			
1JN9-08-12	3/4"X16	Z3/4"X14	37.9	44	27			
1JN9-10-06	7/8"X14	Z3/8"X18	37.8	32.5	22			
1JN9-10-08	7/8"X14	Z1/2"X14	37.8	37.3	22			
1JN9-10-12	7/8"X14	Z3/4"X14	41	44	27			
1JN9-10-16	7/8"X14	Z1"X11.5	44.5	50	33			
1JN9-12	1.1/16"X12	Z3/4"X14	44.2	44	27			
1JN9-12-08	1.1/16"X12	Z1/2"X14	44.2	40	27			
1JN9-12-16	1.1/16"X12	Z1"X11.5	49	50	33			
1JN9-12-20	1.1/16"X12	Z1.1/4"X11.5	52.5	54.5	41			
1JN9-14-12	1.3/16"X12	Z3/4"X14	47.5	45	30			
1JN9-14-16	1.3/16"X12	Z1"X11.5	48.7	50	33			
1JN9-16	1.5/16"X12	Z1"X11.5	49	50	33			
1JN9-16-12	1.5/16"X12	Z3/4"X14	49	45.2	33			
1JN9-16-20	1.5/16"X12	Z1.1/4"X11.5	54	60.5	41			
1JN9-16-24	1.5/16"X12	Z1.1/2"X11.5	59.4	59.5	48			
1JN9-20	1.5/8"X12	Z1.1/4"X11.5	55.5	54.5	41			
1JN9-20-16	1.5/8"X12	Z1"X11.5	55.5	54.5	41			
1JN9-20-24	1.5/8"X12	Z1.1/2"X11.5	59.4	63	48			
1JN9-24	1.7/8"X12	Z1.1/2"X11.5	62.5	63	48			
1JN9-24-20	1.7/8"X12	Z1.1/4"X11.5	62.5	63	48			
1JN9-32-24	2.1/2"X12	Z1.1/2"X11.5	75.4	70	63			
1JN9-32	2.1/2"X12	Z2"X11.5	75.4	67.5	63			

注：螺母及衬套需另行订货。管子直径 D 为公制时，配用螺母及衬套分别选用 NB200、NB500。管子直径为英制时，配用螺母及衬套分别选用 NB200、NB300。 Note: Nut and sleeve should be ordered separately. The nut NB200 and sleeve NB500 is suitable for metric tube, the nut NB200 and sleeve NB300 is suitable for inch tube.